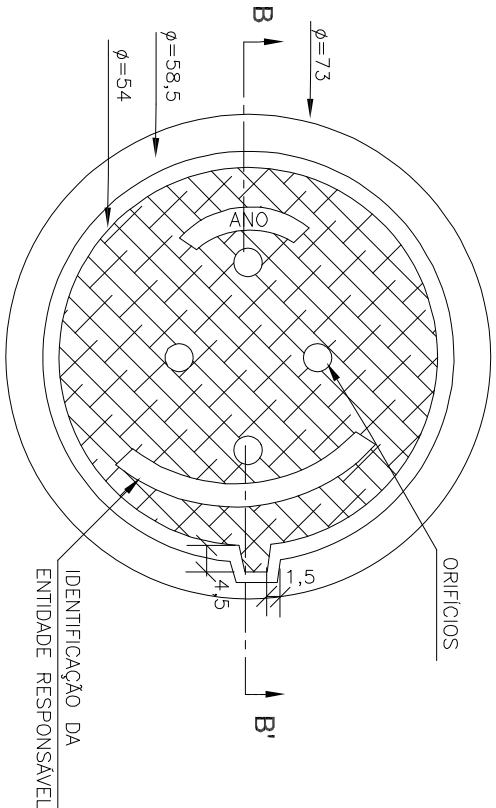


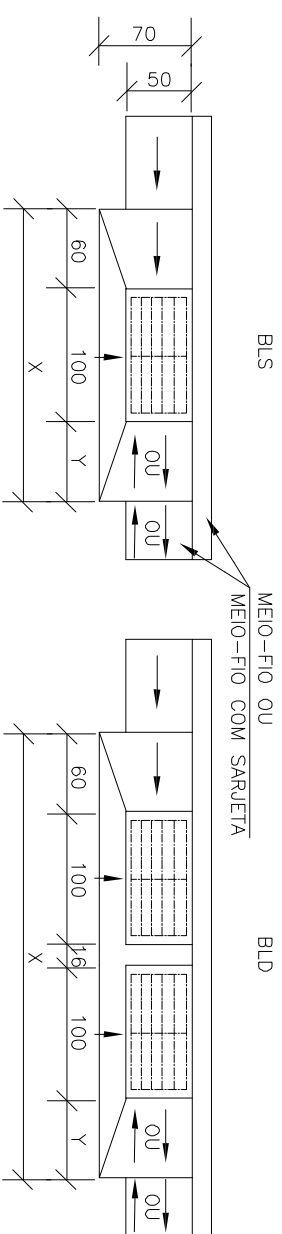
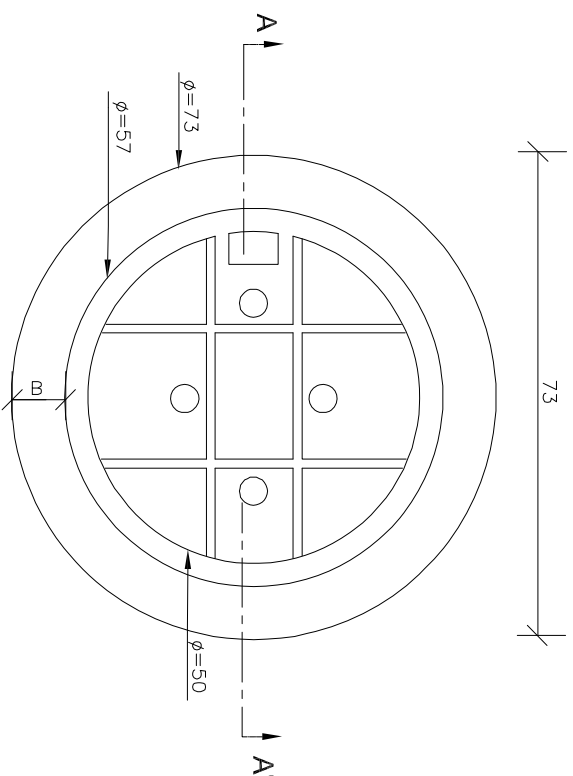
POÇOS DE VISITA - DETALHES COMPLEMENTARES

DEPRESSÃO DAS BOCAS-DE-LOBO-PLANTA

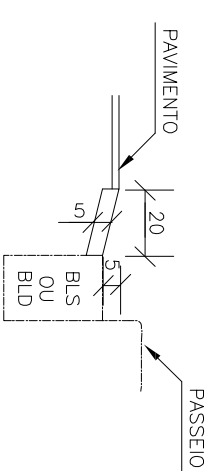
TAMPÃO DE FERRO FUNDIDO - VISTA SUPERIOR



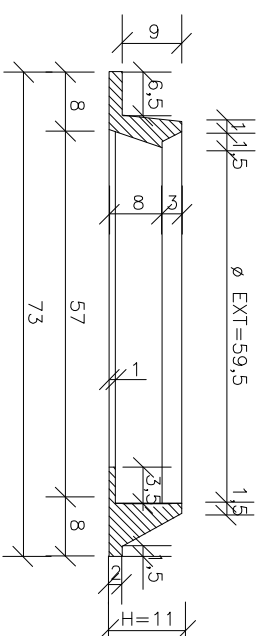
VISTA DO FUNDO



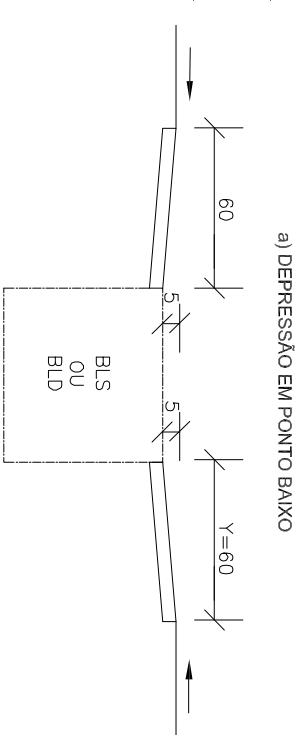
CORTE TRANSVERSAL



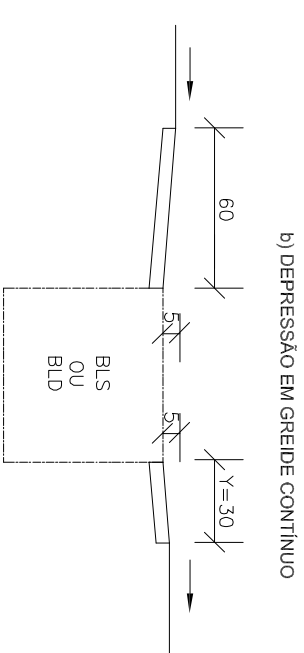
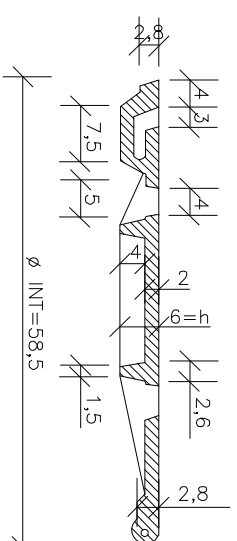
CORTE AA' (CAIXILHO)




CORTE LONGITUDINAL



CORTE BB' (TAMPÃO)



<div><p>PREFEITURA MUNICIPAL DE VARZEA GRANDE <i>amais - esquecer - esquecer</i></p></div>		<h1>POÇOS DE VISITA - DETALHES COMPLEMENTARES</h1>	
<div>Áreas:</div>		LOCAL: PARQUE DEL REY VARZEA GRANDE -MT.	
		PROPRIETÁRIO:	
		PREFEITURA MUNICIPAL DE VARZEA GRANDE/MT	
		R.T. ELABORAÇÃO: 	
R.T. EXECUÇÃO: 		DATA: JULHO/2018	
DESENHO:		ESC.: S/ ESCALA	
FOLHA:		33/35	

NOTAS:

1 – Dimensões em cm;

2 - O tampão de ferro fundido deverá apresentar peso global na faixa de

105 a 110 kgf atender aos requisitos da nbr-6598/81 e resistir ao trem-tipo de 45t;